

# Infrastructure Data Management System

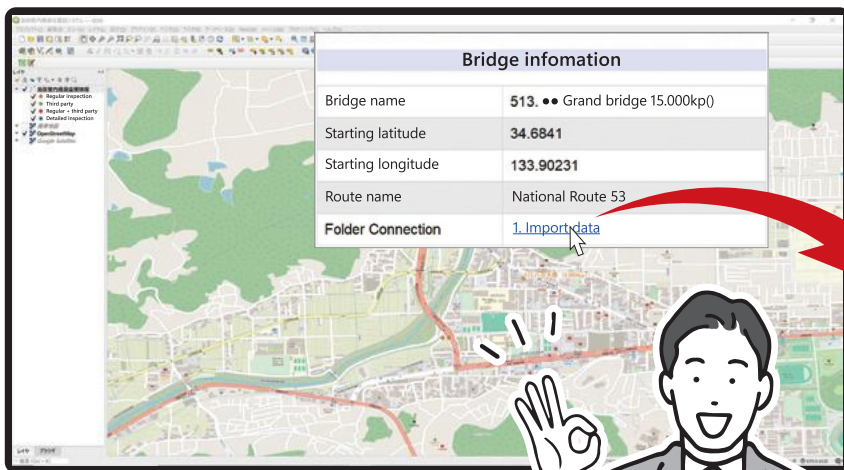
# inMap

This system combines infrastructure data and maps for management. It's easy and quick to locate and confirm the relevant data on the map!

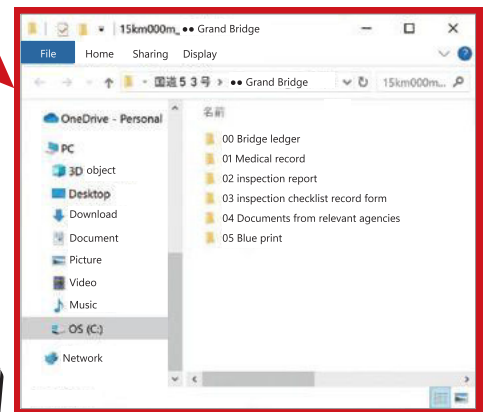
Does it take a long time to find the infrastructure data within the managed area?



With the ability to open Windows® Explorer on the map, locating related data becomes fast and simple.



- Folder structure is customizable
- Just place the new data into the folder
- Compatible with any infrastructure



- High-spec PCs are not necessary
- Map data is created using the free QGIS\*
- Available for use in both cloud and local environments

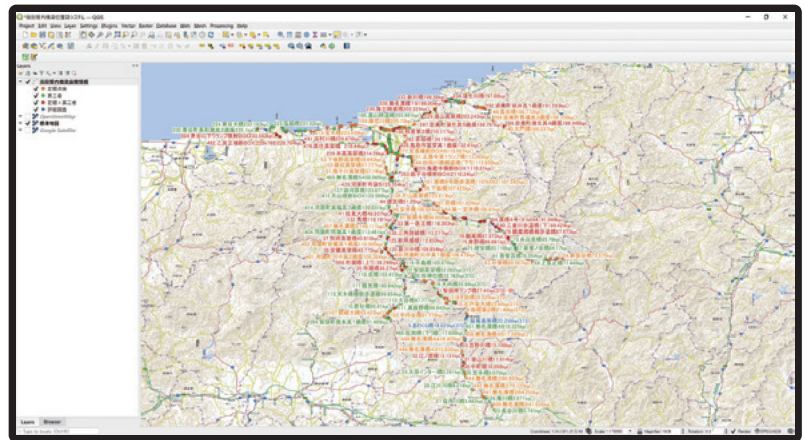
\* QGIS is a trademark or registered trademark in Europe and other countries.

The desired infrastructure can be easily located at a glance

We can view the entire infrastructure within the managed area on a map.

If we add basic information about the infrastructure, such as type, condition assessment, and importance, it can be color-coded and displayed according to each classification.

Additionally, display items can be categorized, making it easy to locate the infrastructure and have an access to the related data instantly.



On-site verification of the specific infrastructure is also smooth and efficient

Does it take a long time to identify the specific infrastructure we are looking for during onsite inspections? (especially for consecutive similar-shaped culverts, etc.)

inMap manages infrastructure with coordinates, so if we take a laptop or tablet (Windows®) equipped with a GPS receiver (USB connection) on-site, we can smoothly navigate to the target infrastructure while viewing the map.

Of course, you can check the data. on-site.



Optional Extras Street View can be explored for the desired structure

It is possible to add the 'KIMOTO360 Editor Eight Japan Technology Development Enhanced Version' software, which creates a three-dimensional space by combining spherical images captured by a 360° camera.

Using the Kimoto360 Viewer on the PC, the structure of interest can be confirmed as if we were on the site.

